

## Before You Begin



It is crucial that the OEM ink supplied with your printer is installed before you attempt to install your SubliJet inks. This does two things for you. First, it primes the ink delivery system, ensuring that the SubliJet ink will load more easily. Second, it familiarizes you with the basic operation of your printer. Please see the EPSON Stylus Photo 1280 Printer Basics Guide.

## Preparing the QuickConnect for installation

1. Set the cartridges and attached support structure down on a level surface with the cartridges tilted forward onto their front edges. Carefully arrange the female connectors so they are easily identified and not tangled. See Fig. 1.

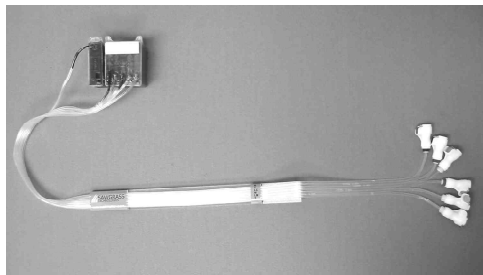


Fig. 1

2. The connectors are color coded for easy identification. Remove the plastic cap from the black ink bag and insert the male connector into the female connector on the tubing. See Fig 2. Once the black bag is attached, attach the rest of the ink bags to their corresponding colored tube.

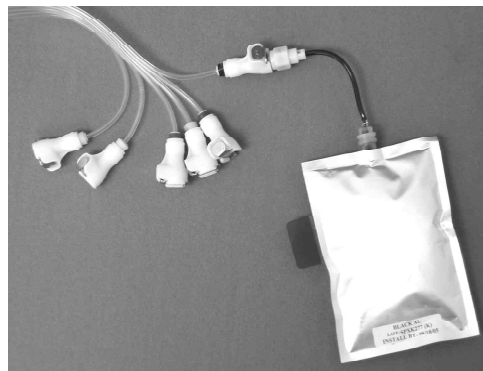


Fig. 2

3. Once all of the bags are attached to the QuickConnect system place the bags into the ink rack. The rack has color coded dots for each bag.
  - a. Hold the female connector of the black bag and 3-4 inches of tubing above the corresponding position in the ink rack. See Fig. 3.
  - b. Slide the tubing into the slot and place the female connector firmly into the round opening. See Fig. 4.
  - c. Place the bag in the holder. See Fig. 5.
  - d. Repeat steps A-C for all colors of the ink.

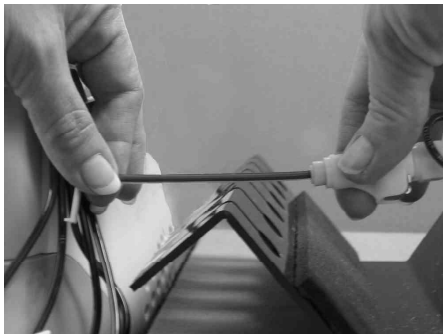


Fig. 3

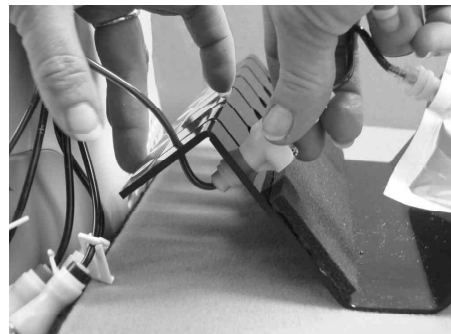


Fig. 4

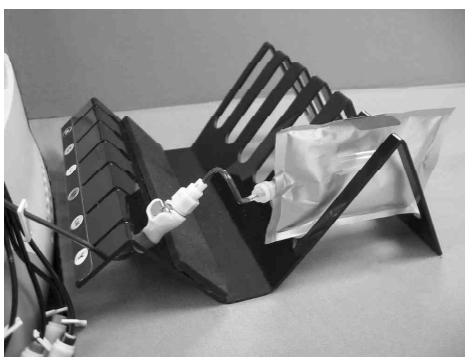


Fig. 5



The ink bags should never be elevated above the printer or ink may drip from the print heads.

## Installing the QuickConnect cartridges

1. Open the printer cover and press the yellow button on the front panel of the printer to move the print head to the left. Unplug the printer from its electrical source.
2. Set the cartridges inside the cartridge bay. Ensure the black cartridge is sitting on the hooks of the black cartridge holder lid. The color cartridge will not sit on the hooks of the color cartridge lid. See Fig. 6.



Fig. 6

3. The tubing from the color cartridge fits in the space between the black cartridge and the black cartridge lid. The black tube will extend out beneath the black cartridge lid towards the back of the printer. See Fig 7 and Fig 8.

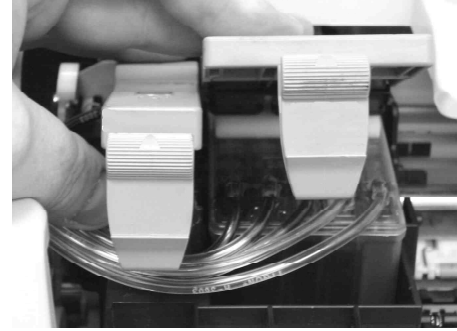


Fig. 7



Fig. 8

4. Close the cartridge holder lids until they snap into place. Tubing will protrude from beneath the black cartridge lid and should sweep towards the left side of the printer. The black tubing will protrude towards the back of the printer. See Fig. 9.

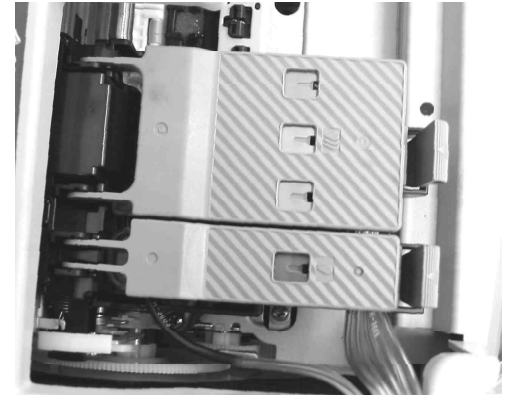


Fig. 9

5. Place the 1280 Positioning Template on the right side of the printer to determine where the 3M Dual Lock Tape should be attached. Once positioned, tape it in place. See Fig. 10.



Fig. 10

6. Clean the area where the adhesive will contact the printer with the alcohol pad provided. Let dry.
7. Pull the bottom piece of 3M Dual Lock Tape off of the support bracket, peel the plastic backing and attach to the marked position. **Firmly push down the entire piece.**

8. Slide the print head left and right, as far as it will go to ensure that none of the tubing or any part of the QuickConnect system touches the interior of the printer.

9. When you are confident that the QuickConnect system will not interfere with normal print head movement, plug in the printer and allow it to move to the parked position.

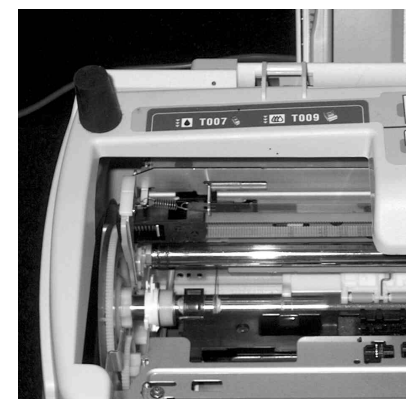


Fig. 11

10. Clean the printer and the bottom of the rubber bumpers with the alcohol pad provided and attach the Velcro circles to the bumper and to the printer. Push them firmly into place.

11. Mark the position for the rubber bumpers used to prop open the lid. The bumpers should be far enough towards the back of the printer, to keep the lid from putting pressure on the Acrylic Support arm. See Fig. 11 and Fig. 12.

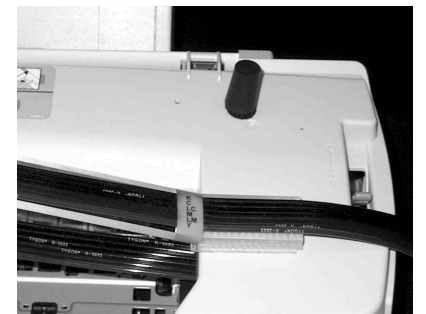


Fig. 12

12. Once the QuickConnect is installed properly, remove the paper backing from the clip's adhesive strip and firmly stick the clip against the side of the black cartridge holder lid. Press the tab to open the clip. See Fig. 13.



Fig. 13

- Pull the tubing flush into the clip. Ensure the tubing is not pinched in any way as to constrict ink flow. See Fig. 14

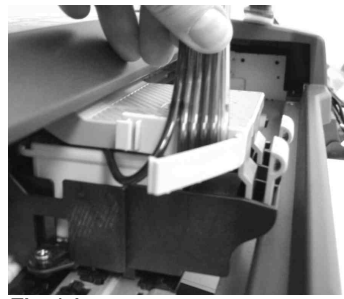


Fig. 14

- Close the clip securely. See Fig. 15
- Turn on the power to the printer and allow the cartridges to return to the parked position.



Fig. 15

## Priming the QuickConnect cartridges and tubing with ink

- If you have not already done so, install the PowerDriver IQ™ software that came with your new system. For detailed installation instructions please refer to the PowerDriver IQ User Guide.
- Access the PowerDriver IQ properties to run the PowerPrime
  - For Windows 95, 98 and ME users:
    - Select **Start>Settings>Printers**
    - Right-click on the PowerDriver PRO software and select **Properties**
    - Select the PowerDriver PRO tab; see Fig 1.
    - Click **Setup Utilities**
    - On the Setup Utilities screen click the **PowerPrime** button; see Fig 2.
    - Click **OK** to run the PowerPrime.

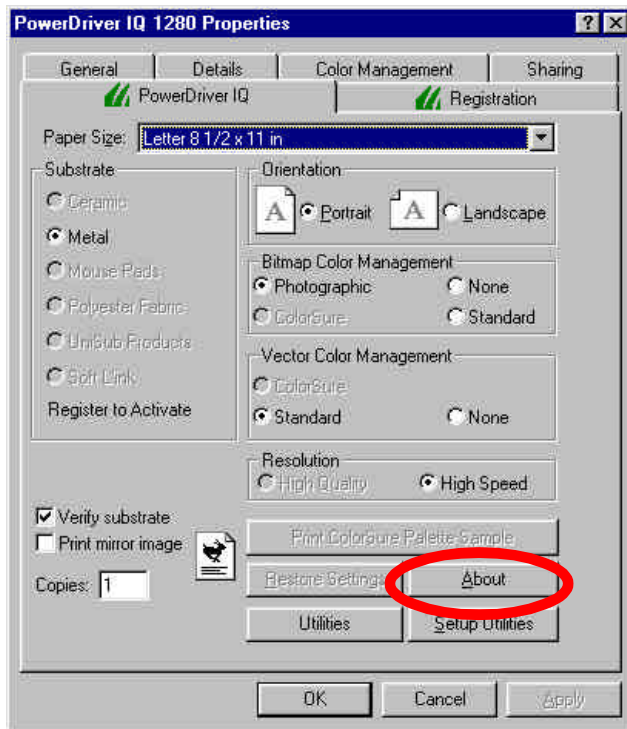


Fig. 1

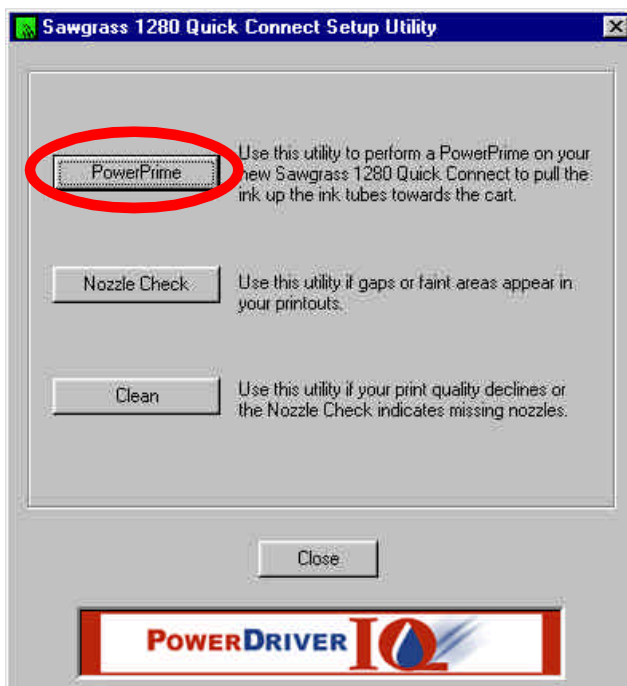


Fig. 2

- For Windows 2000, XP users:
  - Select **Start>Control Panel>Printers and Faxes**.
  - Right-click on the PowerDriver IQ software and select **Properties**.
  - On the General tab click the **Printing Preferences** button.
  - On the PowerDriver IQ Properties tab, click **QC Utilities**; see Fig 3.
  - On the QC Utilities screen, click the **PowerPrime** button; see Fig 4.
  - Click **OK** to run the PowerPrime.

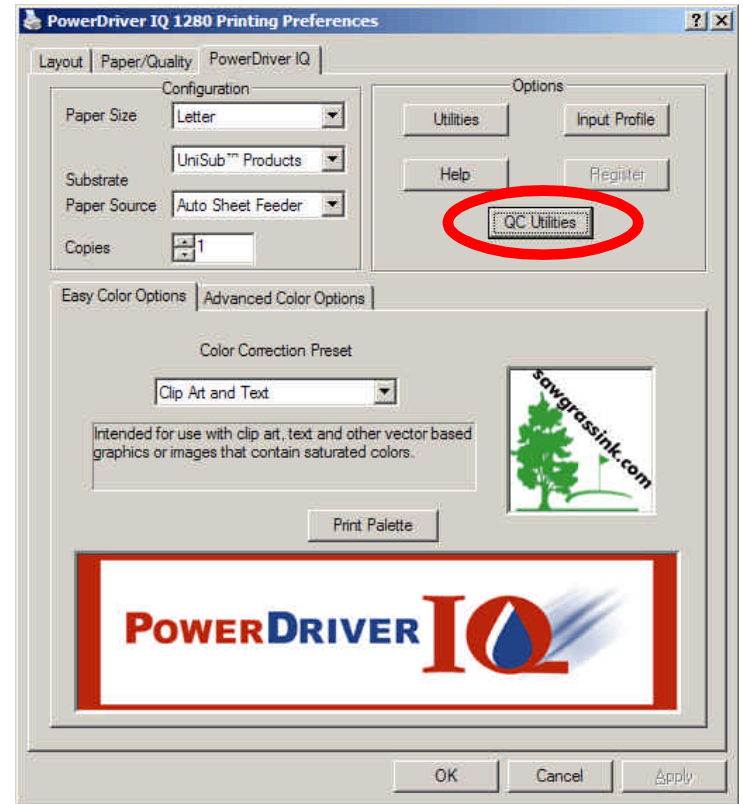


Fig. 3

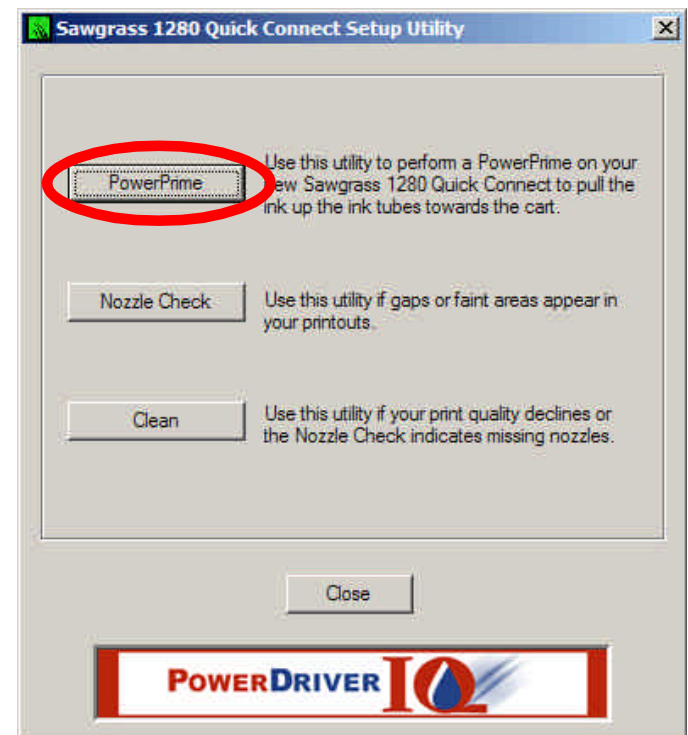


Fig. 4



**Read This**

**The PowerPrime will partially fill the tubes with ink. The purpose of the prime is to move enough ink into the tubing to start printing. Do not be alarmed by air remaining in the tubing.**

- Once the QuickConnect has been primed, ensure that all nozzles are firing properly by performing a Nozzle Check from the Setup Utilities Screen. If the nozzle check pattern is broken or gaps appear, a few cleaning cycles may be necessary to return the pattern to normal.
- Your new QuickConnect system is ready to use



