

Cutting Transfer Paper using Roland CutStudio

Step 1: Preparing your Image for Roland CutStudio

- a) Open coke can.jpg in photoshop or corel draw.
- b) Create an outline around the coke can
 - a. In Photoshop, use the magic wand tool and click on the background to select it. Then go into edit and stroke. Type in 16 pixels for the width and center. Then push ok
 - b. Making a black outline on the object helps CutStudio create the cut lines easier and minimizes the white border of the laser transfer once pressed

Step 2: Importing & Adjusting Image Size in Roland CutStudio

a) Open Roland CutStudio

b) Change on-screen paper size

To make it easier to visualize the size of your graphic, choose "File" > "Cutting Setup" > click "Properties" > choose the "Size" tab > adjust your cutting area to your paper size.

ie. Letter size = W 8.5" x L 11"

Paper size on screen will now be more proportional to your image.

Make sure this is set up according to the paper size that you are using.

** Please note that step "b" is optional, and included for ease of use.*

c) Import your image

Choose "File" > "Import" > select coke can.jpg image > click "Open" > your image appears in Cutstudio.

Hint: Don't be alarmed if image appears extra large, this will be adjusted in the next step.

d) Adjust the size of your image. Select one of the two methods below:

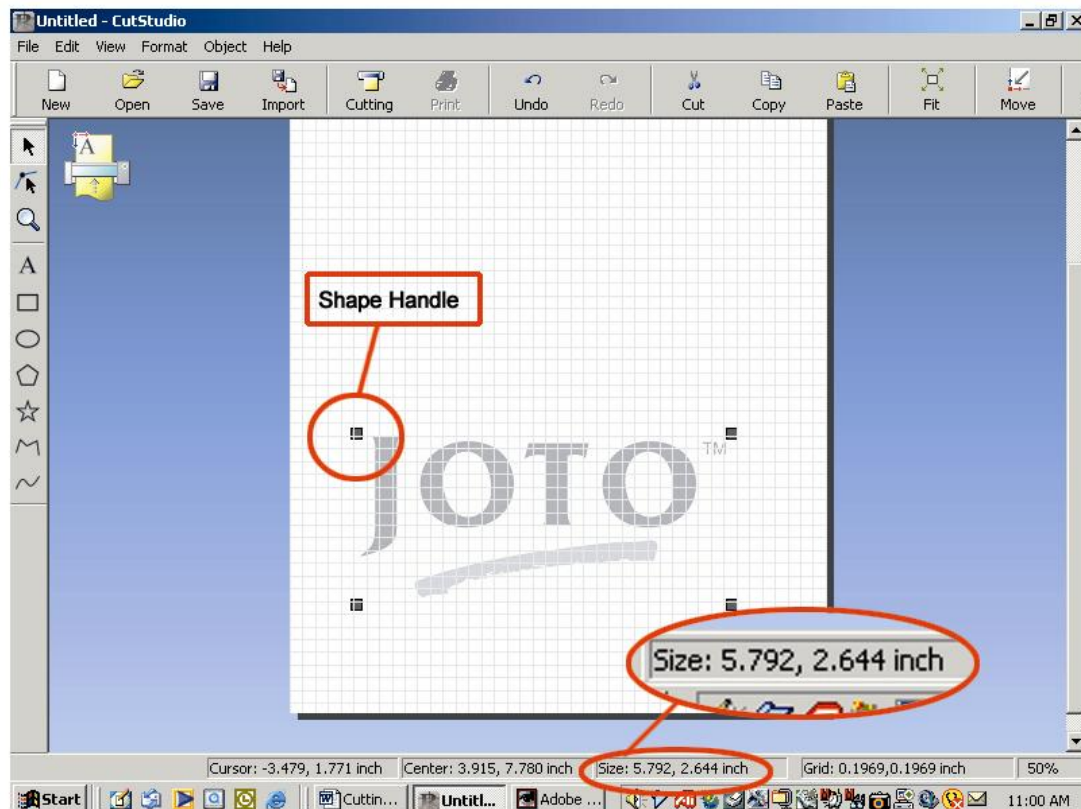
1. Right click the image > choose "Properties" > choose the "Size and Shape" tab > adjust your image accordingly.

Hint: As long as the "Keep Aspect" box is checked, your images will be enlarged/reduced proportionately.

2. Using your mouse, click and drag on the shape handles located on the four corners of your image (see Figure 1) to resize your image.

Hint: Use the size display as a guide – located on the bottom right of your screen.

Figure 1: Adjusting the size of your image

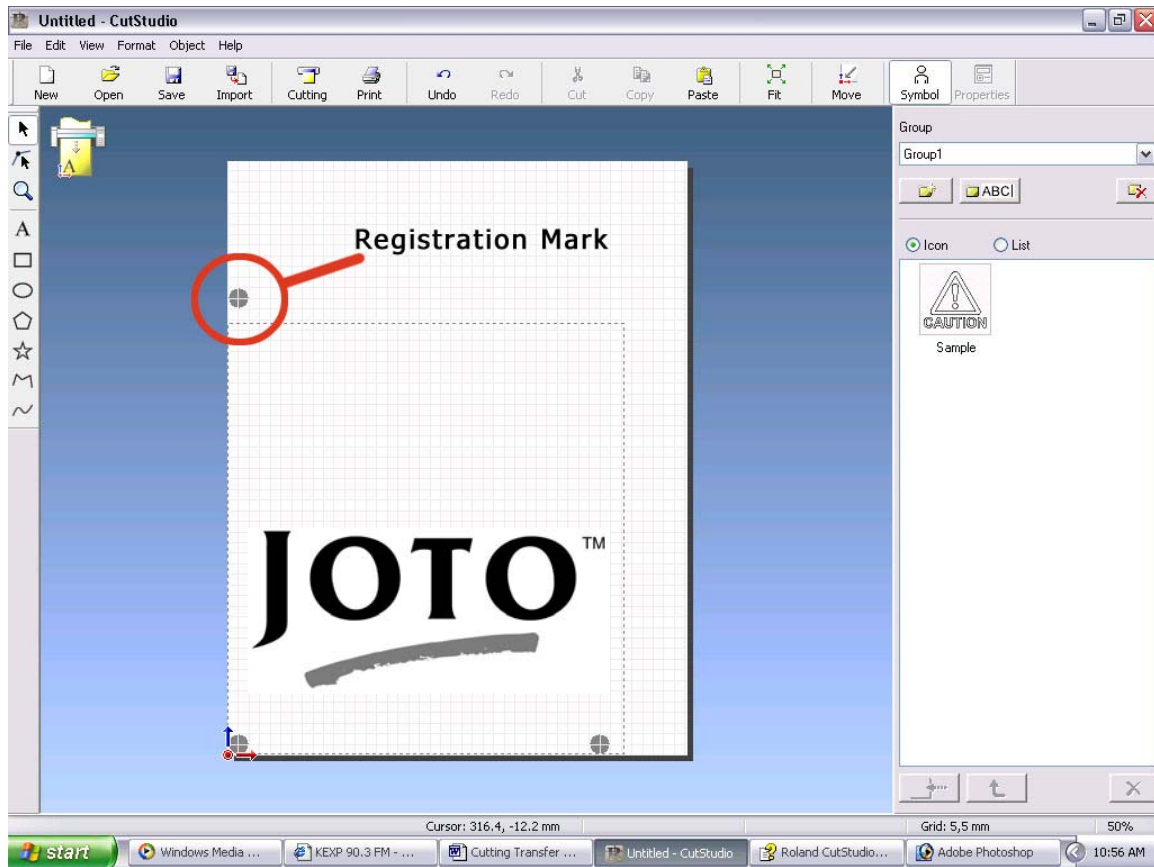


Step 3: Preparing to Print and Cut

a) Prepare your template

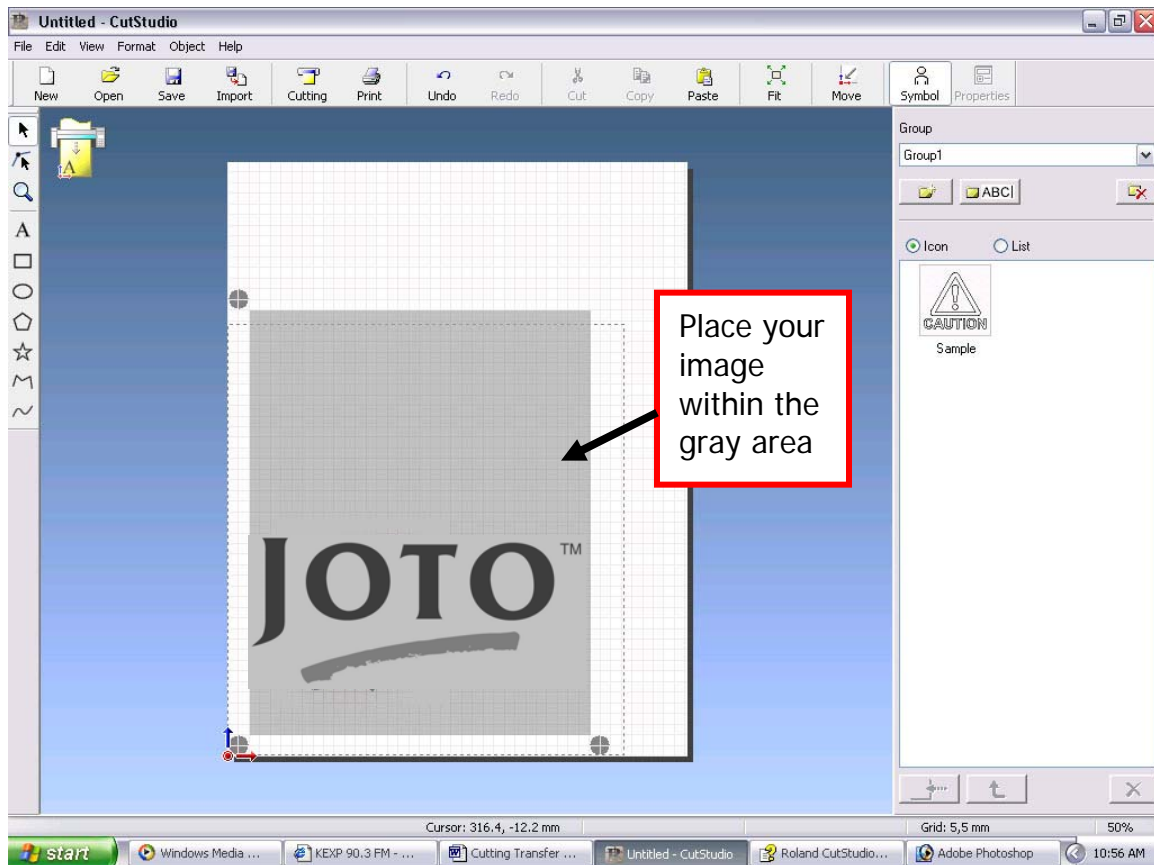
Choose "File" > "Print & Cut" > three registration marks appear (see Figure 2)

Figure 2: Registration Marks



- b) Position your image within the three registration marks. (See Figure 3)**

Figure 3: Placing your image within the registration marks



- c) Create your contour lines**

Right click your image > choose "Image Outline" > adjust the "Alignment Image Density" as you like > click "Extract Contour Lines". For the coke can, slide the bar almost all the way to the left so that you only see the outline on the preview

Blue lines represent new cut lines, if satisfied click "OK"

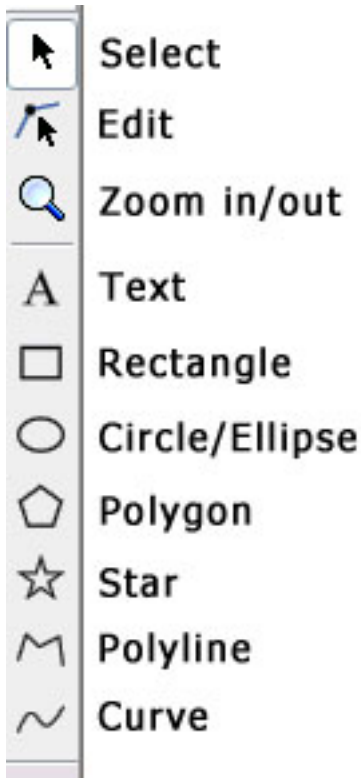
- d) Adjust your contour lines**

If contour lines need adjusting or removal do so now using the tools available.

(See Figure 4 on next page)

Hint: For complete instructions on creating, adjusting and manipulating contour lines choose "Help" > "Contents" > "Operation Procedures"

Figure 4: Toolbar



** All tools, including text, create contour lines.*

For the Coke Can, It is necessary to break the cut lines apart. Do so by right clicking on the cut lines and click break polyline. Unselect the cut lines, then select and delete the inner cut line. We will be using the outer one.

e) Offset your contour lines to create a "bleed effect" once cut

Using the "Select Tool" select on your contour line > contour line turns blue once selected > choose "Object" from the menu > choose "Offset" > dialogue box appears > select "Inside", adjust lines as you like > select **OLD** contour line and delete. Recommended offset for coke can is 0.025in

Or

Just offset the cut lines to cut into your image if no black outline was created before.

Hint: If your image contains contour lines **within** contour lines, “offsetting” may cause inner contour lines to move in the opposite direction – inspect your cut lines and adjust accordingly.

Step 4: Printing

a) Setting up the printer

Choose “File” > “Printing Setup” > ensure your margins and cropmarks are set up similar to the values below:

Margins

Top: 56mm
Bottom: 20mm
Left: 15mm
Right: 14mm

Cropmarks

Width: 170mm
Length: 210mm

Hint: If you cannot change your margin or cropmark settings, you may need to change your specified paper size. Choose the “Setting up printer” button located in the “Printing Setup” dialogue box and choose letter sized paper.

NOTE: IF YOUR PAPER IS 8.5" x 11" MAKE SURE SETTINGS ARE FOR THAT SIZE, NOT A4 (8.27" x 11.69") SIZE AS MENTIONED IN HINT ABOVE.

*** Please note that the example provided is for letter/A4 size paper in the portrait position. For margin and cropmark dimensions for other sized paper or landscape mode choose “Help” > “Contents” > “Hints and Tips” > “Performing Printing and Cutting Using a Printer”*

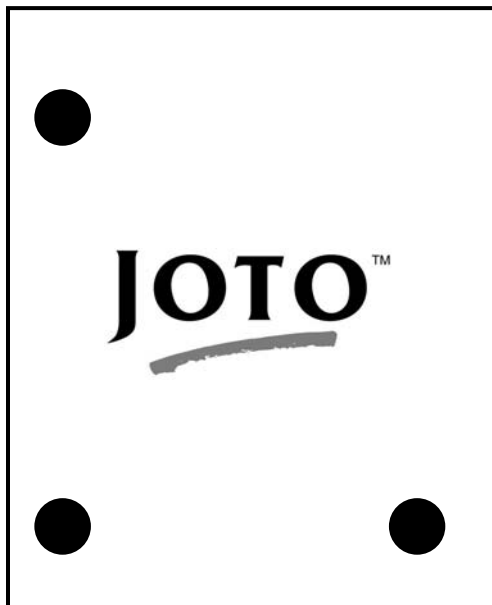
b) Print your image

Inkjet Printer: (Cropmark settings are same as above) Choose "File" > Print > choose your inkjet printer > change paper sizes to letter throughout > choose the "Paper" tab > choose "Maximum" in the Printable Area section > print preview > "OK" to print

Hint: Ensure that the "Mirror" function is **OFF**.

Printout should look like the Figure 5 on the following page.

Figure 5: Comparing your print out



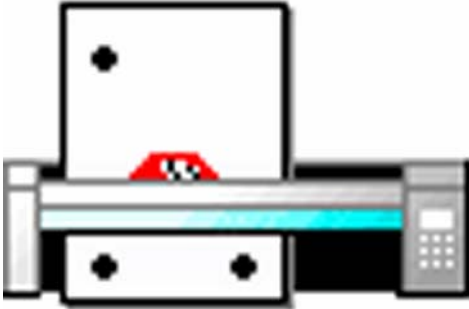
*** Do NOT exit Roland CutStudio at this time!**

Step 5: Loading your Transfer Paper

a) Turn on your Roland GX-24 Cutter

Press and hold the blue power button for several seconds.

b) Insert the transfer paper as shown below:



c) Adjust the rollers for your paper dimensions and position the paper

Position the rollers so that they are situated on the edges of the paper; ensure that rollers are located below the white strips (four white strips located above the rollers).

**** IMPORTANT: MAKE SURE BOTTOM 2 CROP MARKS ALIGN ON TOP OF WHITE PROTECTION STRIP ON THE CUTTER**

Line up the paper using the guides, then clamp rollers down.

Hint: Move rollers from the back – it's easier.

d) Adjust your force according to your transfer paper

Test your force by pressing and holding the "Test" button on the Roland GX-24 for several seconds – transfer should peel easily, without cutting through the backing.

Note: 90gf (grams of force) should be fine for cutting transfer paper

e) Change your crop mark setting to "Auto"

Press the "Menu" button > "Unsetup" appears > press the down arrow until you see "Cropmark" >

if **already set to "Auto"** press "menu" button to exit >

if **NOT already set to "Auto"** (display screen reads "manual") press the right arrow > a star appears beside "Manual" > press the down arrow until the screen reads "Auto" > press "enter" > press "menu" to exit.

Step Six: Cutting your Transfer Paper

a) Cutting Setup

In Roland CutStudio choose "File" > "Cutting Preview" > if satisfied DO NOT Click "Print", close that screen and go to next step

b) *When ready to cut: Go "File" > "Cutting" > click OK.

c) Roland GX-24 finds and reads registration marks (red laser eyes come on to read) and proceeds to cut.

Step Seven: Weeding and Celebrating!

a) Remove surrounding transfer paper using a weeding tool

b) Press according to paper/ heat press specifications

c) Admire your beautiful results and celebrate!